

Mark Cazalet

Resonances

2012–2018





Mark Cazalet

Resonances
2012–2018

1–29 March 2018

Serena Morton

Resonances

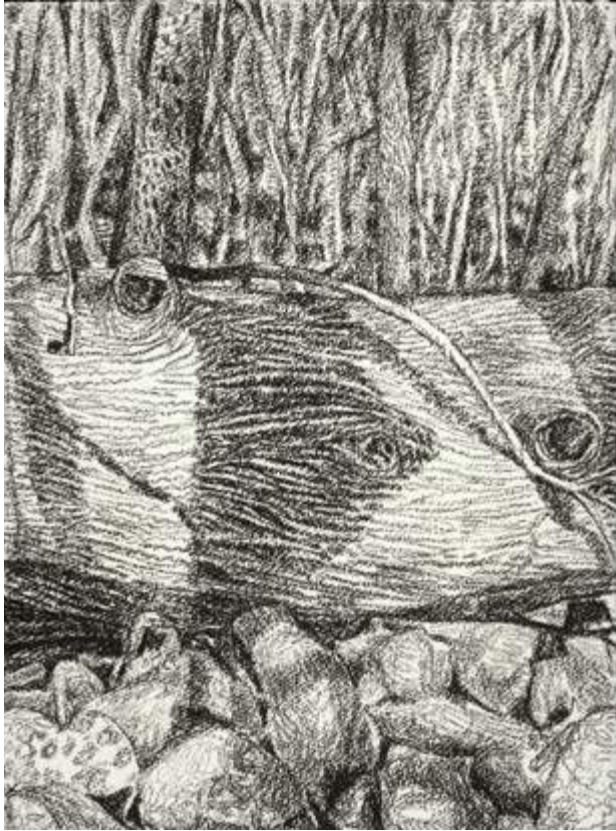
2012–2018

My aim is to create a classical order out of instinctive feeling. This means striking a delicate balance between an impulse for extemporised gestures and patiently crafting a pictorial harmony. All of the work in this exhibition originated as encounters with nature. Each is a site-specific response to the peculiarities of light, spatial depth and the atmosphere occurring at a particular place in time. I view them as *resonances*. Similar to waves in a ripple tank reflecting off the sides, I create dynamic gestalt movement across the surface of the paper. *Resonance* means the sound which is produced by an object when it vibrates at the same rate as the sound waves from another object. In my eyes colour reverberates through an interaction of visual effects; simultaneous colour contrasts, harmonies and discords or in variations of tone and saturation. I modulate these qualities to construct spatial fields and rhythms. Flat patterns of design take on depth that is evocative of the physicality and emotion of the original experience. To play with chromatics in this way is lyrical like setting a song or uttering a psalm. This could be seen theologically as making visible signs for inward transitions in perception, transformations which are endlessly shifting and deepening.

Between the artist's seeing eye, their moving hand and the viewer's reception there is a cat's cradle of exchange, the tauter and better formed the richer the pattern becomes. The paradox is in letting go of straining after this communication, allowing silence to expand and fill the anxious uncertainty of creativity. Perhaps more like coming to, and finding yourself somewhere new and unexpected yet implacably familiar. Andrew Marvell expressed this eloquently in his seventeenth century poem *The Garden*. Our consciousness is transfigured by the power behind nature "to a green thought in a green shade," an effect I aspire for my work to induce, similar to the sense of metanoia being a turning towards light.

*Meanwhile the mind, from pleasure less,
Withdraws into its happiness;
The mind, that ocean where each kind
Does straight its own resemblance find,
Yet it creates, transcending these,
Far other worlds, and other seas;
Annihilating all that's made
To a green thought in a green shade.*

Mark Cazalet, January 2018



Bethany Day 1
2012
conté on paper
38.5 x 29 cm



Bethany Day 2
2012
conté on paper
38.5 x 29 cm



Bethany Night 1
2012
conté on paper
38.5 x 29 cm



Bethany Night 2
2012
conté on paper
38.5 x 29 cm



Bethany Snowscape 1
 2012
 chalks on paper
 42.5 x 55 cm



Bethany Snowscape 2
 2012
 chalks on paper
 48 x 60 cm



SLG Mosaic Diptych 1
2015
oil on masonite
35.5 x 46 cm



SLG Mosaic Diptych 2
2015
oil on masonite
35.5 x 46 cm



SLG Mosaic Diptych 3
2015
oil on masonite
35.5 x 46 cm



SLG Mosaic Diptych 4
2015
oil on masonite
35.5 x 46 cm



SLG Mosaic Diptych 5
2015
oil on masonite
35.5 x 46 cm



SLG Mosaic Diptych 7
2015
oil on masonite
35.5 x 46 cm



SLG Mosaic Diptych 6
2015
oil on masonite
35.5 x 46 cm



SLG Mosaic Diptych 8
2015
oil on masonite
35.5 x 46 cm



Dazzling Darkness 1, 2014, oil on wood, 32 x 48 cm



Dazzling Darkness 3, 2014, oil on wood, 32 x 48 cm



Dazzling Darkness 2, 2014, oil on wood, 32 x 48 cm



Dazzling Darkness 4, 2014, oil on wood, 32 x 48 cm



Anni's Pond Night, 2014, marker pens, crayons pastels and pencils on paper, 40 x 50 cm



Night Shift 1, 2014, marker pens, crayons pastels and pencils on paper, 25 x 50 cm



Night Shift 2, 2014, marker pens, crayons pastels and pencils on paper, 25 x 50 cm



LB Summer 1, 2016, oil pastel on paper, 35 x 70 cm

LB Summer 2, 2016, oil pastel on paper, 35 x 70 cm

LB Summer 3, 2016, oil pastel on paper, 35 x 70 cm



LB Summer 4, 2016, oil pastel on paper, 35 x 70 cm

LB Summer 5, 2016, oil pastel on paper, 35 x 70 cm

LB Summer 6, 2016, oil pastel on paper, 35 x 70 cm



Simeon
2017
oil pastel on paper
80 x 200 cm

Blaze
2017
oil pastel on paper
80 x 200 cm





Blues on Red 1, 2015, conté and chalks on paper, 38.5 x 29 cm



Reds on Blue 1, 2015, conté and chalks on paper, 38.5 x 29 cm



Blues on Red 3
2015
conté and chalks on paper
38.5 x 29 cm



Reds on Blue 4
2015
conté and chalks on paper
38.5 x 29 cm



Reds on Blue 5
2015
conté and chalks on paper
38.5 x 29 cm



Reds on Blue 6
2015
conté and chalks on paper
38.5 x 29 cm



Advent Haze 1, 2018, oil pastel on paper, 110 cm diam



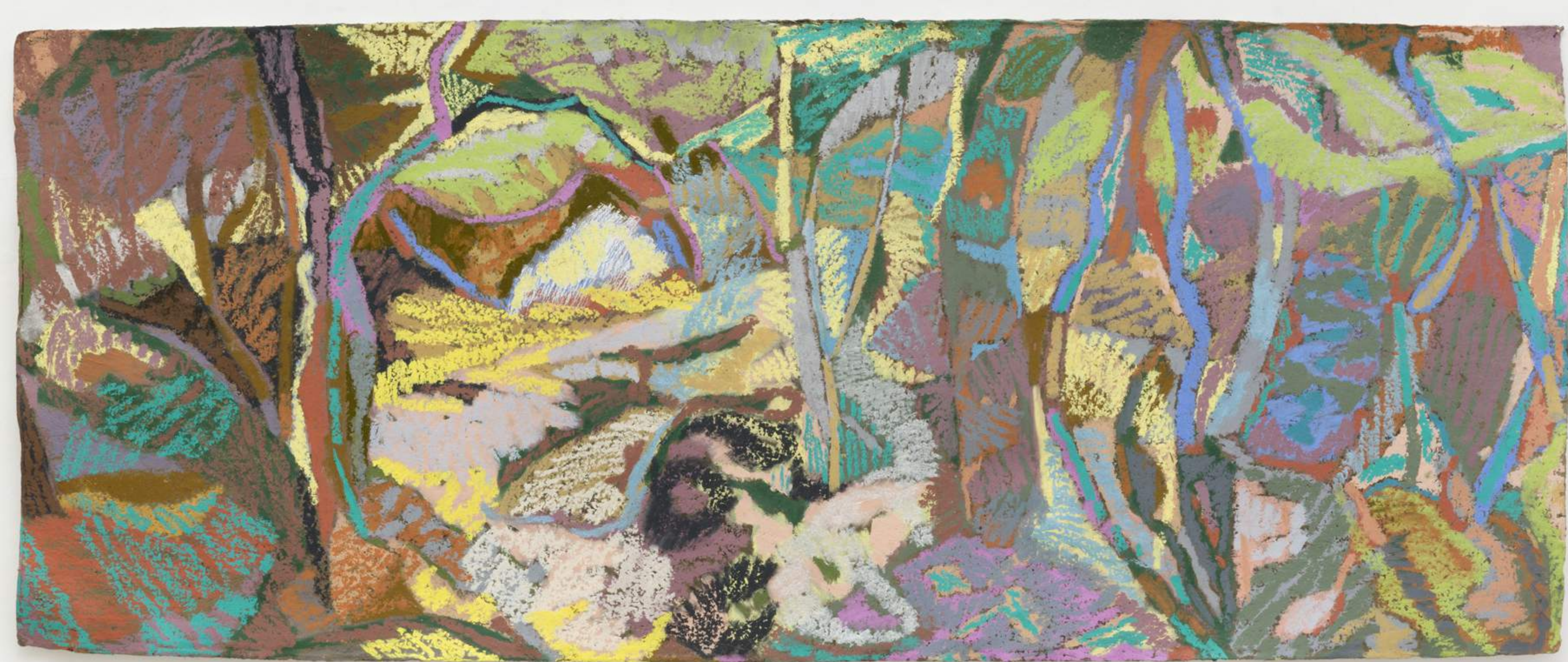
Deep Wood LB, 2017, oil pastel on paper, 110 cm diam



Advent Haze 2, 2018, oil pastel on paper, 110 cm diam



Advent Haze 3, 2018, oil pastel on paper, 110 cm diam



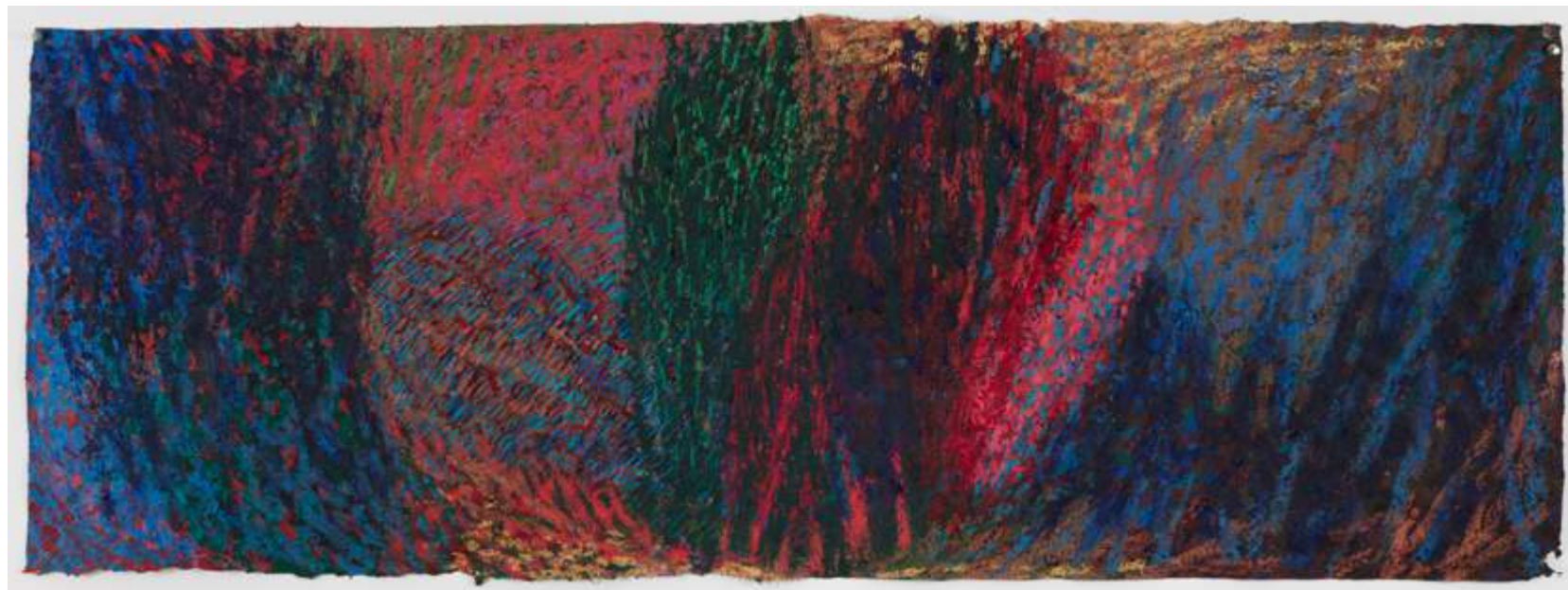
After Lunch with Gauguin
2017
oil pastel on paper
80 x 200 cm

Running Home
2017
oil pastel on paper
80 x 200 cm





Night Watch 1, 2018, oil pastel on paper, 53 x 153 cm



Night Watch 2, 2018, oil pastel on paper, 55 x 152 cm



Night Watch 3, 2018, oil pastel on paper, 55 x 152 cm



Aubade 1, 2018, oil on pastel, 50 x 121 cm

Aubade 2, 2018, oil on pastel, 50 x 107 cm



Aubade 3, 2018, oil on pastel, 52 x 127 cm

Aubade 4, 2018, oil on pastel, 51 x 122 cm



Aubade 5, 2018, oil on pastel, 50 x 123 cm

Aubade 6, 2018, oil on pastel, 51 x 123 cm



Night Watch 4, 2018, oil on pastel, 57 x 155 cm

Aubade 7, 2018, oil on pastel, 56 x 128 cm





Wriggle
2018
oil pastel on paper
80 x 200 cm



Hum
2018
oil pastel on paper
80 x 200 cm



Night Watch 5
2018
oil pastel on paper
55 x 147 cm



Night Watch 6
2018
oil pastel on paper
57 x 153 cm



Night Watch 7, 2018, oil pastel on paper, 57 x 153 cm



Moon Wood 1, 2017, oil pastel on paper, 70 cm diam.



Moon Wood 2, 2017, oil pastel on paper, 70 cm diam.



Moon Wood 3, 2017, oil pastel on paper, 55 cm diam.



WD Dusk, 2017, oil pastel on paper, 55 cm diam.



Grand Aubade 1
2018
oil pastel on paper
80 x 200 cm

Grand Aubade 2
2018
oil pastel on paper
80 x 200 cm





Late Glow, 2018, oil pastel on paper, 135 x 95 cm



Bright Advent, 2018, oil pastel on paper, 135 x 95 cm



Late Glow Small 1
2018
oil pastel on paper
57 cm diam.



Late Glow Small 2
2018
oil pastel on paper
57 cm diam.



Late Glow Small 3
2018
oil pastel on paper
57 cm diam.

Mark Cazalet

- 1988-9 Commonwealth Universities Scholarship: Baroda University, Gujerat State, India
- 1986-7 French Consul National Studentship Award: L'Ecole Nationale Superieure des Beaux-Arts, Paris; awarded one-year residency at the Cite-Internationale-des-Arts, Paris
- 1983-6 Falmouth School of Art: BA Fine Art
- 1982-3 Chelsea School of Art: foundation course

Solo Exhibitions

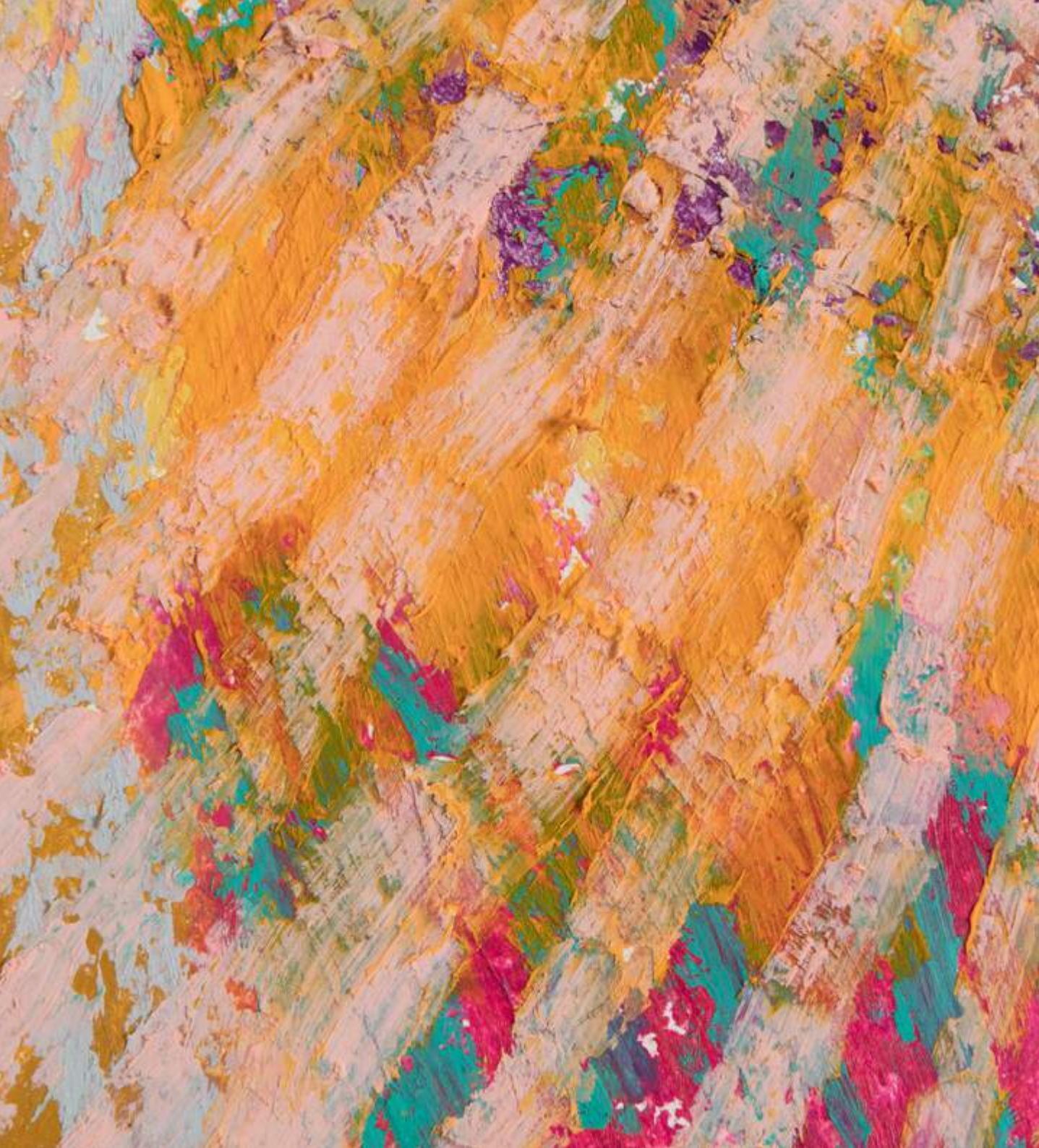
- 2018 *Resonances*: Serena Morton Gallery, London
- 2016 *Silent colour Meditation: a great cloud of witnesses, 153 heads*: St Edmundsbury Cathedral
- 2015 *Moments of Transformation*: Curwen gallery, London
- 2012 *The Ocean in a Tree*: The Concert Hall Gallery, Snape Maltings, Suffolk
- 2008 *Everyday Epiphany*: Beardsmore Gallery, London
- Stations of the Cross*: Salisbury Cathedral
- 2005 *Travelling with open eyes*: Guildford Cathedral
- 2004 *An Egyptian Apocrypha*: St Katherine Cree, London
- 2002 *Bath Rugby Residency Drawings*: Museum of Rugby, Twickenham
- The Sound of Trees*: Six Chapel Row Contemporary Art, Bath
- 2000 *The Four Quartets*: Lady Margaret Hall, Oxford University
- 1998 *Cathedrals of Industry*: Museum of London
- 1996 *Paradoxes and Paradigms*: Lichfield Cathedral
- 1995 *Intangible Worlds*: East West Gallery, Blenheim Crescent, London
- 1994-6 *The Path to Calvary*: Rocket Contemporary Art, Cork Street, London and touring to The Lincoln Cathedral & Usher Gallery, Winchester Cathedral, Lady Margaret Hall Chapel
- 1993 *Pictures out of India*: The Nehru Centre, London
- 1992 *Mark Cazalet*: Christopher Hull Gallery, London

Collections

- The Josef and Anni Albers Foundation
- Birmingham City Library
- British Council, Bombay, India
- Coopers & Lybrand Deloitte, London
- Edward James Foundation, West Dean College
- Fitzwilliam Museum, University of Cambridge
- Getty Center, California, USA (*The Path to Calvary*, book)
- Guildhall Art Gallery, London
- Hammersmith and Fulham Borough Council Collection
- Hounslow and Spelthorne Community and Mental Health Service Trust
- Indian High Commission, Nehru Centre, London
- Kuwait National Collection
- Lady Margaret Hall, Oxford University
- Methodist 20th-Century Art Collection
- Msheireb Properties Collection, Doha, Qatar
- Museum of London
- Museum of Rugby, Twickenham, London
- Taunton and Somerset Hospital
- University of Alberta
- University of Iowa
- University of Surrey, Roehampton
- Victoria Art Gallery Bath

Residencies

- 2016 St Edmundsbury Cathedral one year artist-in-residence; *Silent Colour Meditation* project
- 2015 Borgo Pignano Artist residency programme, Tuscany, Italy
- 2013 Josef and Anni Albers Foundation, CT, USA, artist in residence
- 2012 Josef and Anni Albers Foundation, CT, USA, artist in residence
- 2011 Msheireb Residency, Doha, Qatar: Dohaland architectural project
- 2007 West Dean College Summer School, artist in residence
- 2004 Palestine/Israel Pilgrimage with *Biblelands*, artist in residence
- 2003 Egypt Pilgrimage with *Biblelands*, artist in residence
- 2001 Assembly, South West Arts artist in residence at Bath Rugby Club



Serena Morton

Catalogue photography: Angus Mill Photography

Mark Cazalet | Resonances | Price List

<i>Simeon</i>	£12,000 ex. VAT
<i>Blaze</i>	£12,000 ex. VAT
<i>After Lunch With Gauguin</i>	£12,000 ex. VAT
<i>Running Home</i>	£12,000 ex. VAT
<i>Wriggle</i>	£12,000 ex. VAT
<i>Hum</i>	£12,000 ex. VAT
<i>Grand Aubade 1</i>	£12,000 ex. VAT
<i>Grand Aubade 2</i>	£12,000 ex. VAT
<i>Late Glow</i>	£10,500 ex. VAT
<i>Bright Advent</i>	£10,500 ex. VAT
<i>Advent Haze 1</i>	£9,500 ex VAT
<i>Deep Wood</i>	£9,500 ex VAT
<i>Advent Haze 2</i>	£9,500 ex VAT
<i>Advent Haze 3</i>	£9,500 ex VAT
<i>Night Watch 1</i>	£8,500 ex VAT
<i>Night Watch 2</i>	£8,500 ex VAT
<i>Night Watch 3</i>	£8,500 ex VAT
<i>Aubade 1</i>	£8,500 ex VAT
<i>Aubade 2</i>	£8,500 ex VAT
<i>Aubade 3</i>	£8,500 ex VAT
<i>Aubade 4</i>	£8,500 ex VAT
<i>Night Watch 4</i>	£8,500 ex VAT
<i>Aubade 7</i>	£8,500 ex VAT
<i>Night Watch 5</i>	£8,500 ex VAT
<i>Night Watch 6</i>	£8,500 ex VAT
<i>Night Watch 7</i>	£8,500 ex VAT
<i>Moon Wood 1</i>	£4,500 ex VAT
<i>Moon Wood 2</i>	£4,500 ex VAT
<i>Deep Wood Small</i>	£4,500 ex VAT
<i>Advent Haze Small I</i>	£4,500 ex VAT
<i>Advent Haze Small Ii</i>	£4,500 ex VAT
<i>Moon Wood 3</i>	£3,000 ex VAT
<i>Wd Dusk</i>	£3,000 ex VAT

VAT is charged on the *Gallery Margin Scheme* at 10%

<i>Late Glow Small 1</i>	£3,000 ex VAT
<i>Late Glow Small 2</i>	£3,000 ex VAT
<i>Late Glow Small 3</i>	£3,000 ex VAT
<i>Slg Mosaic Diptych 1</i>	£2,400 ex VAT
<i>Slg Mosaic Diptych 2</i>	£2,400 ex VAT
<i>Slg Mosaic Diptych 3</i>	£2,400 ex VAT
<i>Slg Mosaic Diptych 4</i>	£2,400 ex VAT
<i>Slg Mosaic Diptych 5</i>	£2,400 ex VAT
<i>Slg Mosaic Diptych 6</i>	£2,400 ex VAT
<i>Slg Mosaic Diptych 7</i>	£2,400 ex VAT
<i>Sgl Mosaic Diptych 8</i>	£2,400 ex VAT
<i>Dazzling Darkness 1</i>	£2,400 ex VAT
<i>Dazzling Darkness 2</i>	£2,400 ex VAT
<i>Dazzling Darkness 3</i>	£2,400 ex VAT
<i>Dazzling Darkness 4</i>	£2,400 ex VAT
<i>Lb Summer 1</i>	£2,200 ex VAT
<i>Lb Summer 2</i>	£2,200 ex VAT
<i>Lb Sumer 3</i>	£2,200 ex VAT
<i>Lb Summer 4</i>	£2,200 ex VAT
<i>Lb Summer 5</i>	£2,200 ex VAT
<i>Lb Summer 6</i>	£2,200 ex VAT
<i>Bethany Snowscape 1</i>	£1,250 ex VAT
<i>Bethany Snowscape 2</i>	£1,250 ex VAT
<i>Anni's Pond Night</i>	£1,250 ex VAT
<i>Night Shift 1</i>	£950 ex VAT
<i>Night Shift 2</i>	£950 ex VAT
<i>Blues On Red 1</i>	£1,200 ex VAT
<i>Reds On Blue 1</i>	£1,200 ex VAT
<i>Blues On Red 3</i>	£1,200 ex VAT
<i>Reds On Blue 4</i>	£1,200 ex VAT
<i>Reds On Blue 5</i>	£1,200 ex VAT
<i>Reds On Blue 6</i>	£1,200 ex VAT
<i>Reds On Blue 7</i>	£1,200 ex VAT
<i>Reds On Blue 8</i>	£1,200 ex VAT
<i>Bethany Day 1</i>	£750 ex VAT
<i>Bethany Day 2</i>	£750 ex VAT
<i>Bethany Night 1</i>	£750 ex VAT
<i>Bethany Night 2</i>	£750 ex VAT

VAT is charged on the *Gallery Margin Scheme* at 10%